



WELCOME TO OUR NEW BRANDBOOK! BUT THIS IS A **WARNING**: WE ARE ABOUT TO OPEN YOUR MIND! WE WILL BE HAPPY TO SHARE WITH YOU OUR THOUGHTS AND **THE VISION** OF OUR BELOVED COMPANY. IN THIS **SOPHISTICATED** BOOK YOU WILL BE GIVEN AN INSIGHT HOW WE ARE **LIVING** > SEE OUR RECENT PROJECTS. HAVE A LOOK INTO WHAT WE LOVE, HOW WE WORK & DESIGN AND WHERE WE DRAW OUR INSPIRATION FROM. YOU WILL ALSO RECEIVE INSIDE INFORMATION ABOUT OUR PRODUCTS THAT ARE HANDCRAFTED WITH LOVE. AT **SOPHISTICATED LIVING** WE STRIVE TO CREATE THE BEST FITTING FURNITURE FOR EVERY SPACE AND EVERYONE. BUT ABOVE ALL - WE WOULD LIKE TO MAKE THE WORLD HAPPY!

LOVE & PEACE

IMPRINT

 **SOPHISTICATED®**
LIVING

SOPHISTICATED LIVING GMBH
AMALIENBADSTRASSE 41 / BAU 53
76227 KARLSRUHE / GERMANY
TELEFON: +49 721 68 03 28 - 0
TELEFAX: +49 721 68 03 28 - 28
INFO@SOPHISTICATED-LIVING.DE
WWW.SOPHISTICATED-LIVING.DE

WE ARE EXTREMELY AMBITIOUS IN LIVING SOPHISTICATED



SOLID WAVE

3-SEATER WITH LARGE DUVET AND ASSORTED CUSHIONS

w 250 d 125 cm

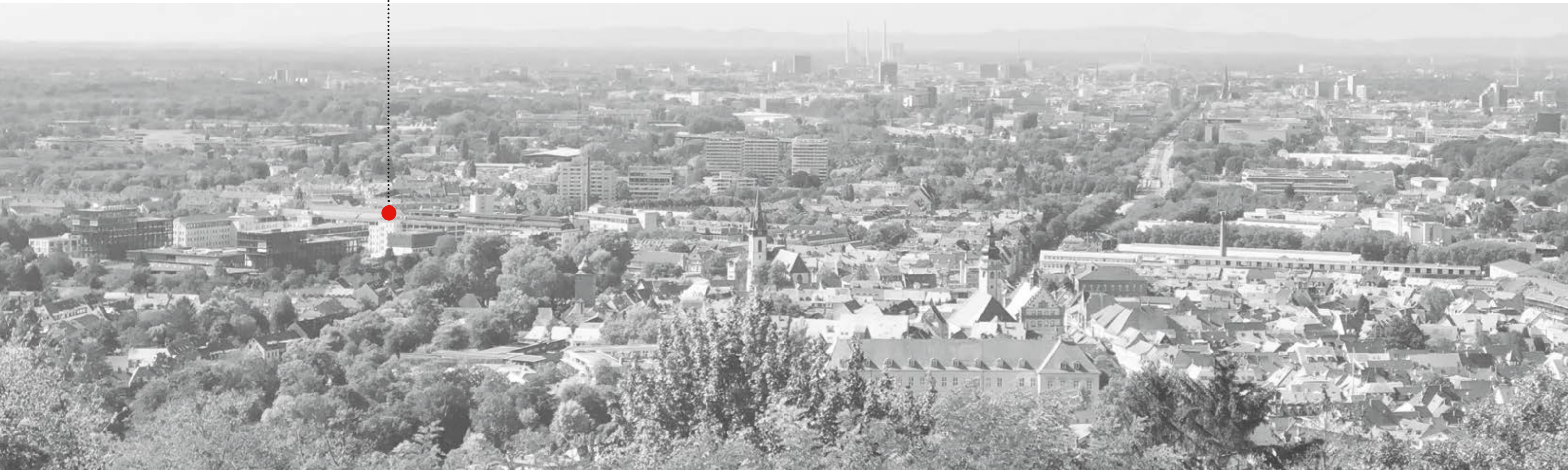




"WHERE WE ARE FROM"

OUR OFFICE

CLOSE TO THE OLD-TOWN OF
KARLSRUHE-DURLACH IN A
MAGNIFICENT FORMER SEWING
MACHINE FACTORY BUILDING





INFINITY

SPACIOUS LIVING LANDSCAPE

IN FABRIC DELICATO

w 340 d 280 cm



PEAK

CORNER SOFA WITH STEEL FRAME AND SIDE TRAY
IN FABRIC FASHION

w 222 d 319 cm

"TAKE THE MOMENT AND MAKE IT PERFECT!"



WE ARE ABOUT TO OPEN YOUR MIND





HOLIDAY RESIDENCE

CLIENT UNTERPETERSBÄCHLERHOF
LOCATION FISCHBACH / DAHN, GERMANY
INTERIOR DESIGN HUMAN.TOUCH.INTERIORS



VACATION RENTAL **APARTMENTS**

CUSTOM MADE FURNITURE MANUFACTURED TO MEASURE-
ACCORDING TO YOUR IDEAS AND PROJECTS - THINK INDIVIDUAL



COOPER BED

LIE DOWN, CLOSE YOUR EYES AND RELAX
HEADBOARD WITH SQUARE SEAMS
IN FABRIC LUXURY



INSPIRED BY **NATURE**

MADE-TO-MEASURE HEADBOARD & SHAKA BED



SOLID WAVE | SUMMER SWELL | MAVERICK

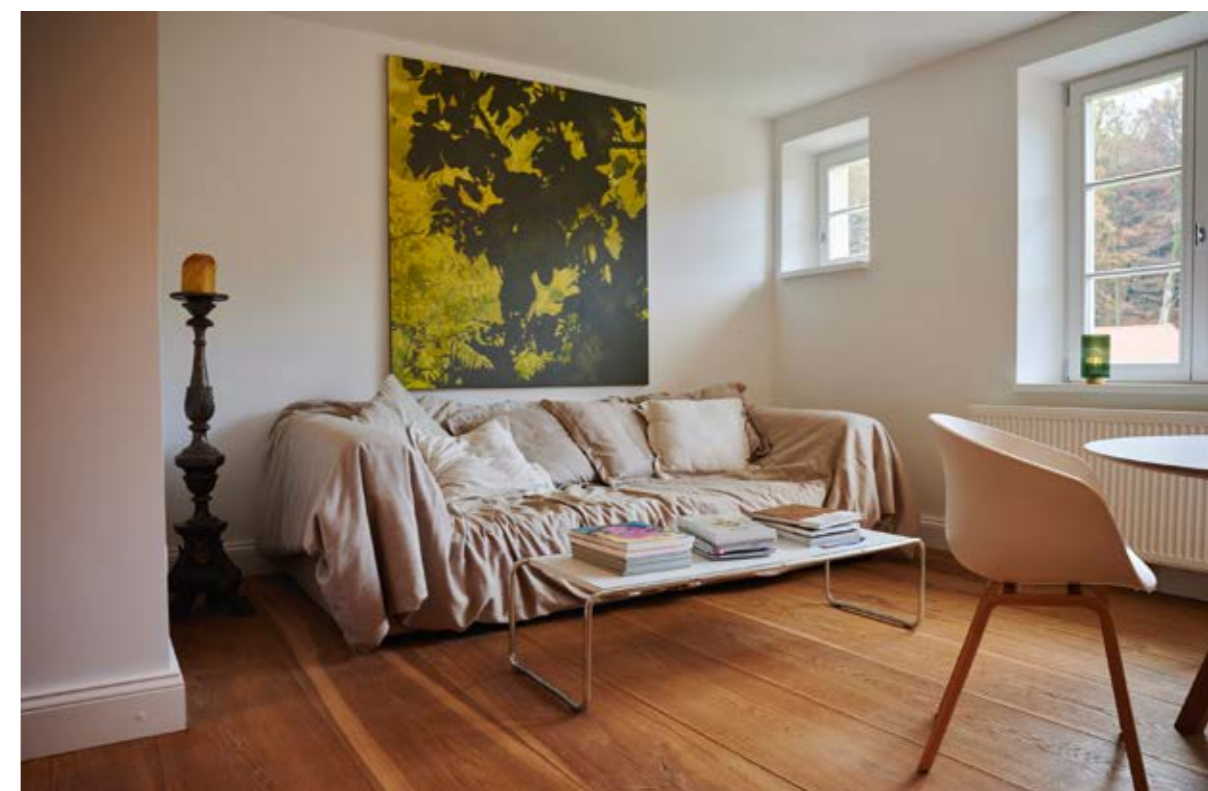


MAVERICK

SECTIONAL SOFA
IN FABRIC CASHMERE
w 258 d 278 cm



EXTERIOR SHOT OF BUILDING IN FISCHBACH



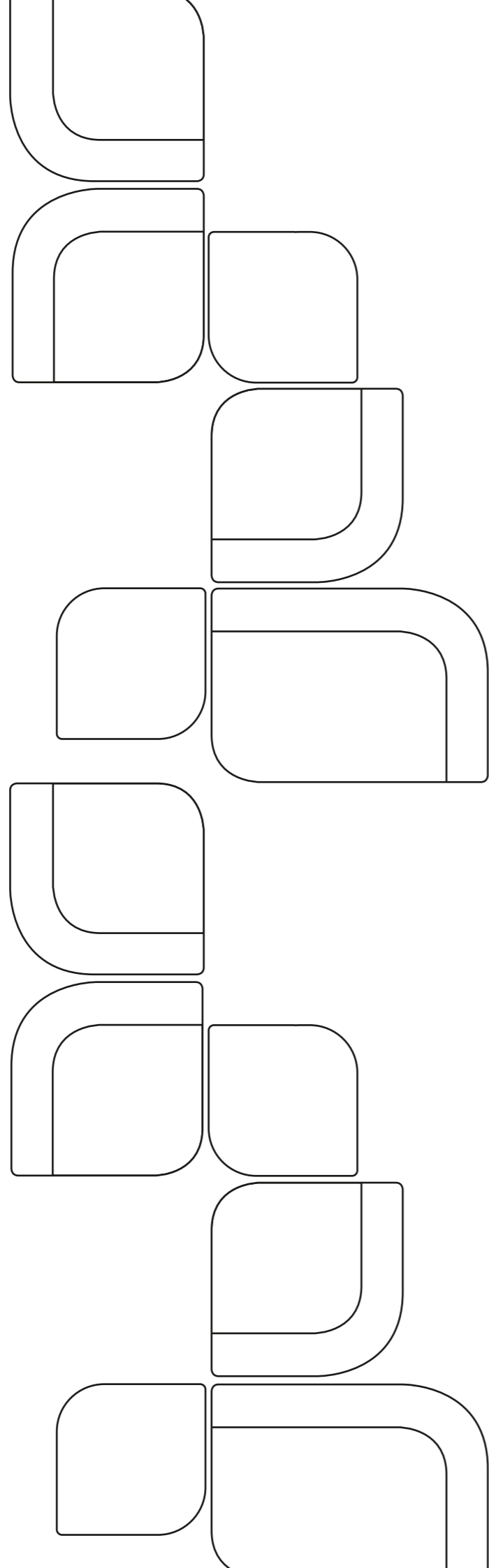
SOLID WAVE

LOUNGE SOFA WITH DUVET
AND CUSHIONS
IN COZY LINEN FABRIC
w 250 d 125 cm



SUMMER SWELL

SECTIONAL SOFA WITH
ELEGANT BLACK FEET
w 295 d 165 cm



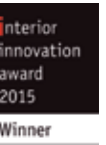
MOTU

FEEL FREE TO ASSEMBLE
FLEXIBLY ALL MODULAR
SOFA ELEMENTS



AWARD WINNING DESIGN

DURING PAST YEARS MANY OF PRODUCT SERIES HAVE BEEN AWARDED WITH INTERNATIONAL DESIGN AWARDS





CHANNEL

SECTIONAL SOFA
FROM 5 ELEMENTS
w 340 d 340 cm

SLATER

WING CHAIR WITH WOODEN BASE



LOCAL

CORNER SOFA EXISTING
FROM 3 ELEMENTS
w 270 d 270 cm

VILLA MIAMI



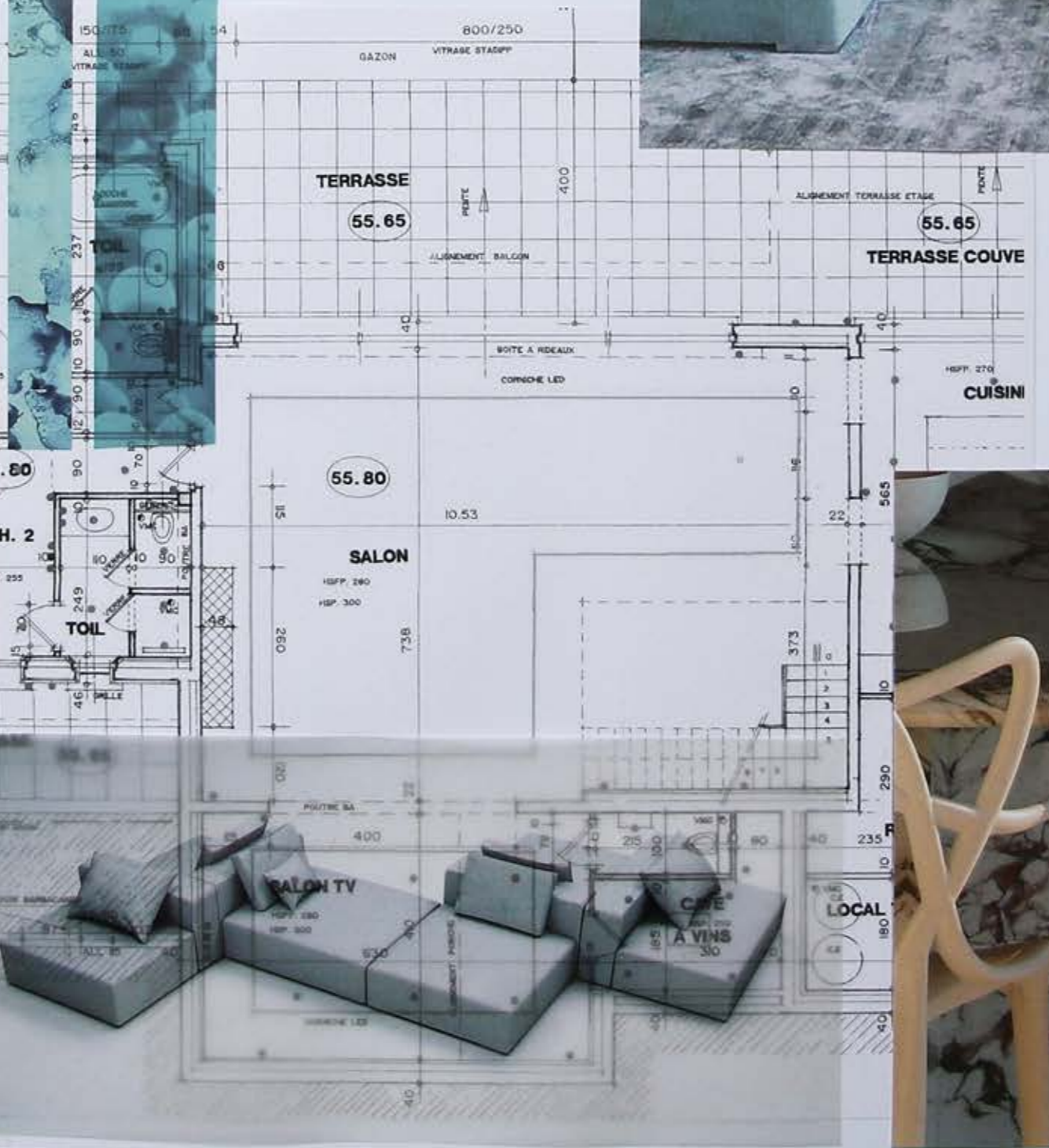


SUMMER **PALAIS**

ST.TROPEZ AT COTE D'AZUR, FRANCE



DROP IN





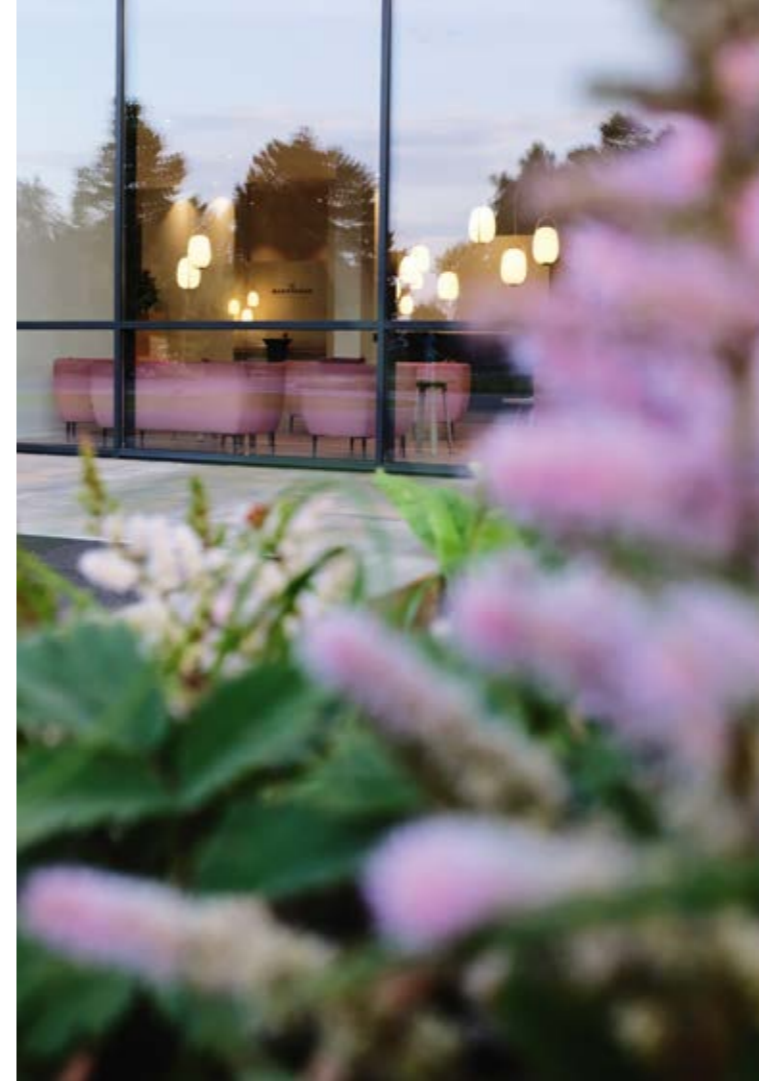
LOCAL

SECTIONAL SOFA WITH LONG CHAIR
w 320 d 170 cm



HEALTH RESORT

CLIENT KURHOTEL MARIENKRON
LOCATION MÖNCHHOF, AUSTRIA
INTERIOR DESIGN M&G INNENARCHITEKTUR



SERENITY

COCKTAIL CHAIR AND SMALL SOFA
WITH ELEGANT BLACK FEET
IN ROSÉ FABRIC RIME (KVADRAT)



SERENITY

ENTRANCE HALL TO MARIENKRON MONASTERY OF CISTERCIAN WOMEN /
CARE OF YOURSELF DURING A FASTING CURE IN MÖNCHHOF CLOSE TO LAKE NEUSIEDL



PASSION





THE DUKE

3-SEATER WITH STEELFRAME
RAL-COLOR 6024

IN FABRIC FIELD (KVADRAT)

w 226 d 100 cm

ART ECKHARD STEINHORST

OBJECT BOGEN-RELIEF 2020



TEAM WORK



HARMONY / PARTNERSHIP / SYNERGY / ALLIANCE /
UNITY / ASSISTANCE / HELP / UNION / SYMBIOSIS

SPA HOTEL

CLIENT	HOTEL STEIGENBERGER
LOCATION	KREMS A.D.D., AUSTRIA
INTERIOR DESIGN	ROOMS WOHNKONZEPTE





HANAPEPE

SECTIONAL SOFA WITH DIFFERENT STYLES OF ARMREST
w 340 d 170 cm

COOPER BED

THE HEADBOARD WITH DEEP PADDING GIVES AN ELEGANT NOTE TO YOUR INTERIOR.



MALIA

COCKTAIL CHAIR & POUF WITH WOODEN BASE FROM OAK
IN FABRIC REMIX (KVADRAT)





ALANA

SECTIONAL SOFA WITH LONG CHAIR
IN FABRIC OLYMP

w 290 d 190 cm

CREATIVITY

TWO-SEATER MINISOFA SERENITY IN FABRIC BOTERO (ROMO)





KEALA

SECTIONAL LOUNGE SOFA
IN FABRIC HOT MADISON (CHIVASSO)

w 361 d 401 cm



KEALA LIGHT

4-SEATER

IN FABRIC LENNOX (JAB ANSTOETZ)

w240 d112 cm

CLOSE-UP

THE MAGIC IS IN THE **DETAILS**



"SIMPLICITY IS THE ULTIMATE SOPHISTICATION"

Leonardo da Vinci



PHOTOGRAPHY:

PAGE 5, 6-9, 16-29, 52-53, 58-59, 64-65 CHRISTIAN ERNST

PAGE 12-13 FUENF6 GMBH

PAGE 14-15 THOMAS A. BERGER

PAGE 29, 31, 40-41, 51, 61-63, 68-71, COVER ARNO KOHLEM

PAGE 42-47 STEVE HAIDER

PAGE 48-49 PHOTO BY PHOTOHOLGIC ON UNSPLASH,
PHOTO BY JOEL VODELL ON UNSPLASH

PAGE 54-55 PHILIPP SCHUSTER

PAGE 56-57, 66-67 STUDIOS ANDREAS RÄSCH

PAGE 72-73 SASKIA THOMAS



AMBITIOUS MIND



MOTU